



The Attributes Tab

Jennifer M - 2018-12-04 - ESP Updates

Access the Attributes section to modify the descriptive information about the product. Click on the Add a New Product button or the Edit button in the Manage Products tab, then click on Attributes.

An item cannot be made active without product color information.

After adding or editing the information, click on the Save button. If you are completely finished managing the product information and are ready to make it live; click on the Make Active button.



Within the Attributes tab, you are able to add, edit, or remove:

Color (Required)

Add a New Color

To add a color for the product, click the general color group (i.e. blue, green, red) which applies to the product. The color criteria/options will display below the colors swatches.

If you want to name your color, click the Rename link and type your specific color name in the name field.

You can also add multiple colors from one general color group. For example, if the product is available in two different blues; such as Lapis and Ocean, select the blue color group twice. Click the rename link on the first Blue color group and type Lapis in the name field. Next, click the rename link on the second Blue color group and type Ocean. Click on the Save link when you are finished.

Select the hue of your color by clicking on the drop down box. By default, the hue will be listed as Medium. You can also add a Hex code to represent an exact color by entering the code in the HEX field. If you enter a HEX code, a preview of the color will be shown in the swatch square.

Color Combinations

To indicate that the product features more than one color in its design, click on the Create Combo link. For example, a raglan t-shirt has a main color on the body and a secondary color for the sleeves. The color listed in the product colors area is the primary color. Select the second color from the Create your Combination Color area.

Use the dropdown to indicate if the color is a secondary, trim or accent color.

- **Secondary:** if a large portion of the item consists of that color.
- **Trim:** if the item is trimmed in that color.
- **Accent:** if the item contains small portions of that color.

Then, click on the Done button. The color will now display with the second color below it. You can use the the Hue dropdown and HEX box to customize the additional color(s).

Create a Color Templates

A color template is a set grouping of colors which can be saved and applied to products. For example, if several products have the same custom colors, you can save the template from one product and apply to as many as you need.

To create a color template, add all of the applicable product colors and configure them. This includes any combination colors, renaming, or custom RGB/HEX codes.

Product Colors

Clear All

Select Color Group

Add Colors & Color Combinations by clicking on any of the color buttons below. You may select the same color more than once.

+ White

+ Blue

+ Brown

+ Assorted

+ Black

+ Purple

+ Orange

+ Multi color

+ Gray

+ Red

+ Yellow

+ Clear

+ Metals

+ Pink

+ Green

+ Other

Other Popular Colors

+ Navy Blue

+ Royal Blue

+ Light Blue

+ Teal

+ Burgundy

+ Maroon

+ Gold

+ Silver

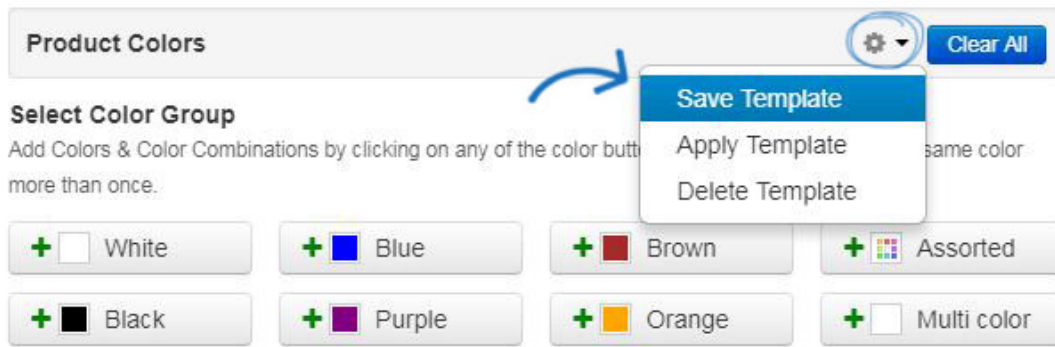
Product Size

Clear All

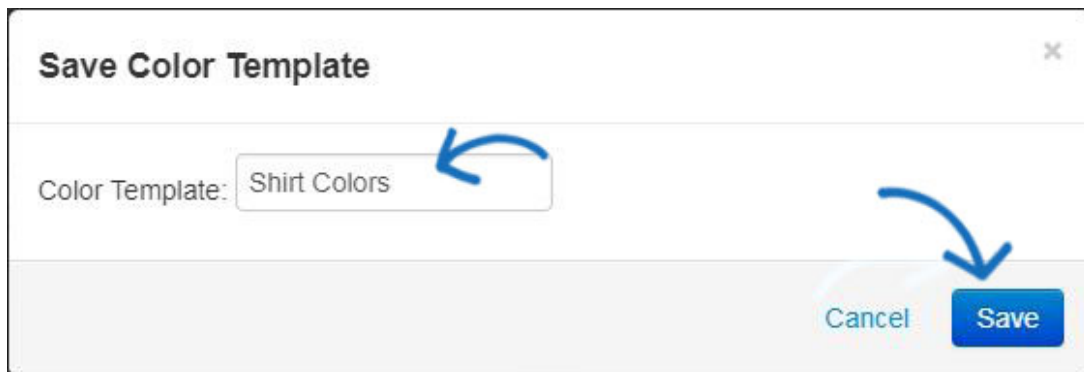
Default Size Type

Apparel-Standard & Numbered – (S,M,L,10,12)

Then, click on the Settings icon (cog) and select Save Template.



Enter a name for the template and then click on Save.



The template is now saved and can be applied to future products.

Apply a Color Template

After creating and saving a color template, it can be applied to other products which have the same color values. You can also apply a template and then edit the color information, so if a product has most of the same color values, you can use the template and then edit it accordingly.

To apply a template, go to the Attributes tab for the product and then click on the Settings icon (cog) in the Colors section. Then, select "Apply Template" from the available options.

Basic Details
Attributes
Imprinting
Pricing
Media
SKU & Inventory
Availability
Summary

Product Colors
⚙️
Clear All

Select Color Group
Add Colors & Color Combinations by clicking on any of the color buttons below. You may select the same color more than once.

+ White

+ Blue

+ Brown

+ Assorted

+ Black

+ Purple

+ Orange

+ Multi color

+ Gray

+ Red

+ Yellow

+ Clear

+ Metals ▾

+ Pink

+ Green

+ Other ▾

Other Popular Colors

+ Navy Blue

+ Royal Blue

+ Light Blue

+ Teal

+ Burgundy

+ Maroon

+ Gold

+ Silver

Product Size
⚙️
Clear All

Default Size Type
(Select Size)

▲ Fill in this info to improve Targeted Search

Product Materials

#1:

Material Type:
(Select Material)

+ Add an Additional Material
▲ Fill in this info to improve Targeted Search

Product Shape

Shapes: Separate shapes with a comma

Starts With ▾

☐ Any Shape ☐ Custom Shape

Item Weight

Weight **Unit**

Deleting a Template

Once a template is no longer needed, it can be deleted by clicking on the Settings icon (cog) in the Colors section and selecting Delete Template.

Product Colors
⚙️
Clear All

Select Color Group
Add Colors & Color Combinations by clicking on any of the color buttons below. You may select the same color more than once.

+ White

+ Blue

+ Brown

+ Assorted

+ Black

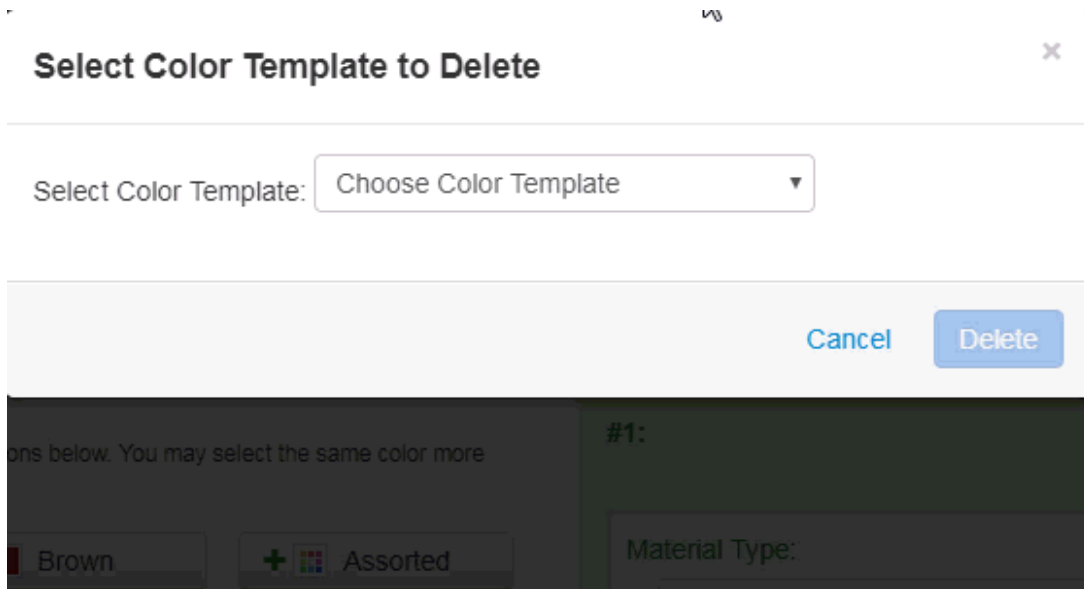
+ Purple

+ Orange

+ Multi color

Save Template
Apply Template
Delete Template

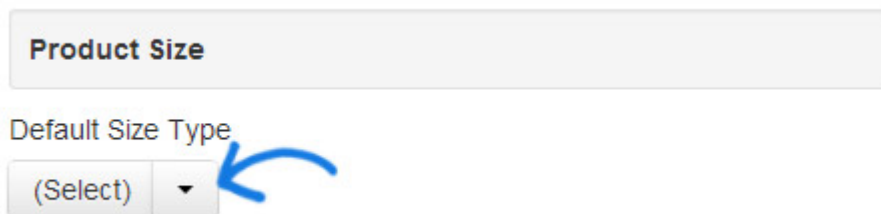
Choose the name of the template from the dropdown and then click on the Delete button.



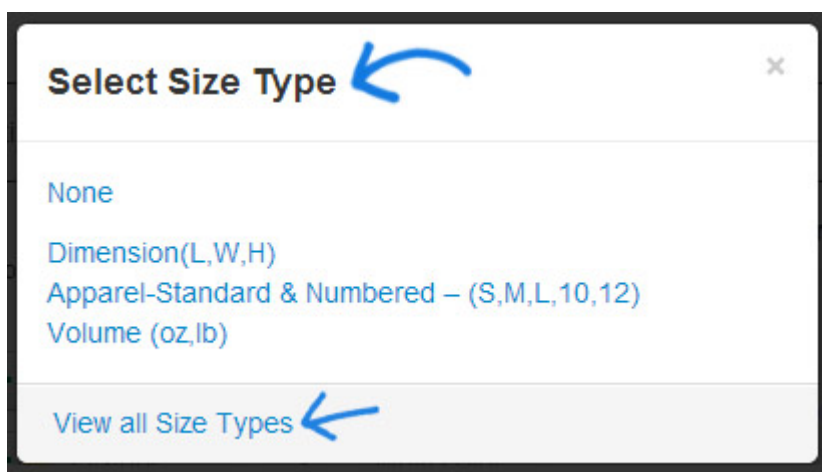
Size

Add or Edit a Product Size

To add or edit the product size(s), click on the (Select Size) button in the Default Size Type section.



The Select Size Type options window will display a selection of size types based on the Product Type for the item. If you do not see an applicable unit for your product, click on the "View all Size Types" link.



Once you select the size type, enter the size information in the available fields. To add additional sizes, click on the "Add an Additional Size" link. To remove a size, click on the "X" for the size.

After adding or editing the information, click on the Save button.

Product Size

Default Size Type

Volume (oz,lb) ▼

| Amount | Unit Type |
|--------|-----------|
| 12 | oz ▼ |
| 16 | oz ▼ |

+ Add an Additional Size

If you are completely finished managing the product information and are ready to make it live; click on the Make Active button.

Create a Size Templates

A size template is a set grouping of sizes which can be saved and applied to products. For example, if several products have the same sizing, you can save the template from one product and apply to as many as you need.

To create a size template, add all of the applicable product sizes and configure them.

Then, click on the Settings icon (cog) and select Save Template. Enter a name for the template and then click on Save.

The template is now saved and can be applied to future products.

Apply a Size Template

After creating and saving a size template, it can be applied to other products which have the same size values. You can also apply a template and then edit the size information, so if a product has most of the same size values, you can use the template and then edit it accordingly.

To apply a template, go to the Attributes tab for the product and then click on the Settings icon (cog) in the Size section. Then, select "Apply Template" from the available options.

Deleting a Template

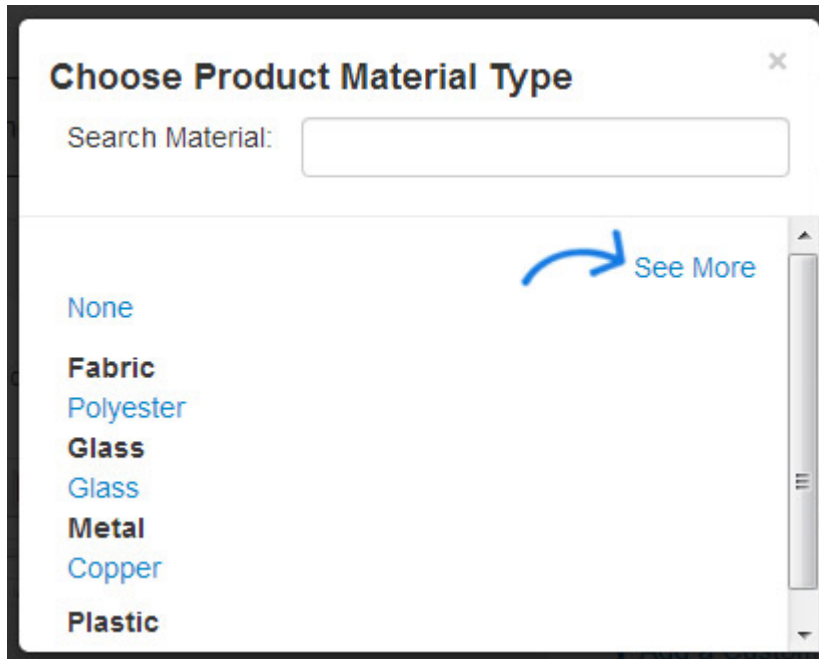
Once a template is no longer needed, it can be deleted by clicking on the Settings icon (cog) in the Size section and selecting Delete Template.

Choose the name of the template from the dropdown and then click on the Delete button.

Material, Shape, and Weight

Material

There are several options when adding materials: add a single material, multiple materials, combination materials or even fabric blends. Start by clicking on the Material Type dropdown. The Select Product Material Type Options window will display a selection of material options based on the Product Type for the item. If you do not see the link for the material type you need, click on the See More link to see all material types available.



To add another available product material, click the Add an Additional Material link.

If your product is made of multiple materials, such as a wool jacket with leather sleeves, click the Create Combo link. You will then be able to select a second material type for your product.

Fabric Blends

If you are working with fabrics which are blends (cotton/poly, nylon/spandex, etc), under Fabric, choose Blend. Note: If you do not see the Blend option under Fabric, click on the See More link.

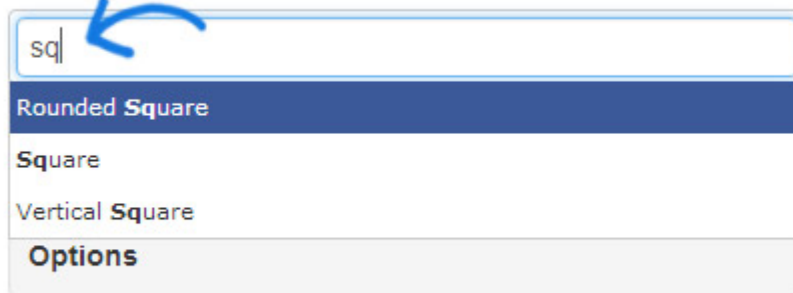
In the instance of a poly/cotton shirt, add the first material and the percentage of the material contained in the fabric and then enter the second material.

The percentage of the second material will auto-populate to total 100 percent.

Shape

Start typing a shape in the Shapes dropdown. A list will auto-populate below the box. Choose the shape of the product from the dropdown list.

Shapes: Separate shapes with a comma

A screenshot of a web form's 'Shapes' section. At the top, a text label reads 'Shapes: Separate shapes with a comma'. Below it is a text input field containing 'sq'. A blue curved arrow points from the text label to the input field. Below the input field is a dropdown menu with four options: 'Rounded Square' (highlighted in dark blue), 'Square', 'Vertical Square', and 'Options' (in a greyed-out state).

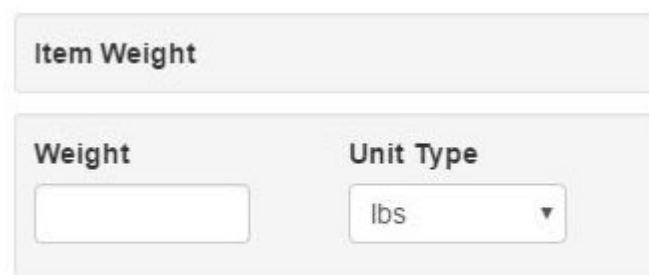
[+ Add a Custom Product Option](#)

You can also check the Any Shape box if this product is available in any shape in your line or check the Custom Shape box if the shape of the product can be custom designed or ordered.

After adding or editing the information, click on the Save button. If you are completely finished managing the product information and are ready to make it live; click on the Make Active button.

Weight

Use the Weight area to include any weight information for this product. Both metric and imperial measurements are available in the unit type dropdown.

A screenshot of a web form's 'Weight' section. It features a header 'Item Weight' in a grey box. Below this is a form with two columns. The left column is labeled 'Weight' and contains an empty text input field. The right column is labeled 'Unit Type' and contains a dropdown menu with 'lbs' selected and a downward arrow.

[+ Add an Additional Weight](#)

Options

You are able to add custom product options in this section. Click on the Add a Custom Product Option. The Add an Option window will open. You will be prompted to indicate whether this option is required for ordering. Next, select "Product" from the Option Type dropdown.

Enter a brief Option Name in the Option Name field. Type the value(s) for the option and then hit Enter, Comma or Tab on your keyboard.

Note: When entering values, enter them individually; not as a grouped value. For example, enter "A", "B", "C" not "A, B, or C".

If only one option value can be ordered check the "Can only order one" checkbox. Enter any additional information which may apply to this option. To include any additional charges for the option, go to the Pricing Tab.

When you are finished, click on Apply to return to the Basic Detail tab or click on Apply & Add to create another option for this product.

Relationships

There are three types of relationships you can use for a product:

- **Companion:** For creating complimentary relationships between products.
- **Substitute:** For creating a substitute relationship between products.
- **Common Grouping:** For grouping products that share common characters.

To create a new relationship, click on the Add New Relationship button. In the Add New Relationship window, enter a keyword or product number in the Search for Product(s) box and then hit Enter. Then, select the products for which you would like to establish a relationship. After select the product(s), use the dropdown to select the relationship type and then click on the Add Relationship button.

Add New Relationship

Search for Product(s):

| Select | Product XID (External ID) ▲▼ | Product Number ▲▼ | Product Name ▲▼ | Product Description ▲▼ |
|-------------------------------------|---------------------------------|----------------------|-----------------|---|
| <input checked="" type="checkbox"/> | 11159-550783126 | | Ceramic Mug | Ceramic c-handle mug |
| <input type="checkbox"/> | 11159-550789777 | | Ceramic Mug | Ceramic mug available in 12 and 16 ounces. Dishwasher safe. |

Select Relationship Type:

The relationship(s) will now be listed in the relationships section. You can create up to 10 relationships per product.

To remove a relationship, select the Related Product and then click on the Delete Existing Relationship button.

Existing Relationship: Choose up to 10 relationships that relate your product.

| Select | Related Product XID ▲▼ | Related Product ID ▲▼ | Related Product Name ▲▼ | Related Product Description ▲▼ | Relationship Type ▲▼ |
|-------------------------------------|------------------------|-----------------------|-------------------------|--------------------------------|----------------------|
| <input checked="" type="checkbox"/> | 11159-550783126 | 550783126 | Ceramic Mug | Ceramic c-handle mug | Common Grouping |

Related Content

- [Attribute Templates FAQs](#)