



## Install ESP Online

Wendy Dujmovic - 2019-06-12 - ESP Online

ESP Online is a software application which can be downloaded onto a PC to locate items and create presentations. You can follow the [quick installation instructions](#) to install ESP Online onto your computer.

**IMPORTANT:** If you are using a MAC to install ESP Online, you will need to use a Windows Emulator, such as Parallels. If you are using a MAC and do not have a Windows Emulator, you can use [ESP Web](#), which is a browser-based ESP application.

To begin installing ESP Online onto your PC, log into the [ASI ESPOnline Login](#) on ASI Central.

Enter your ASI Number, Email Address and Password. Then, click on Enter. If you have forgotten your password, click on the “Forgot Your Password?” link and your password will be immediately emailed to you.

ASI ESPOnline Login	
ASI No:	<input type="text"/>
Email Address:	<input type="text"/>
Password:	<input type="password"/>
<input type="button" value="enter"/>	

[Forgot your password?](#)

The User Info page will open. Your license number will be displayed in the second box of the grid. You will need this number later in the installation, so copy this number or jot it down. Then, click on the “Click here to download ESP Online” link between the arrows.

USER INFO.	
<a href="#">Click here to download ESP Online</a>	
Email Address:	jmannino@asicentral.com
License No:	555555-5555555555555555-5555555
Start Date:	8/30/2007 12:00:00 AM

---

The process of downloading the InstallShield Wizard will vary slightly depending on which browser you are using:

- **Internet Explorer**

At the bottom of the browser window, a message will appear asking if you would like to run or save ESPOnlineSetup.exe. Click on the “Run” button.



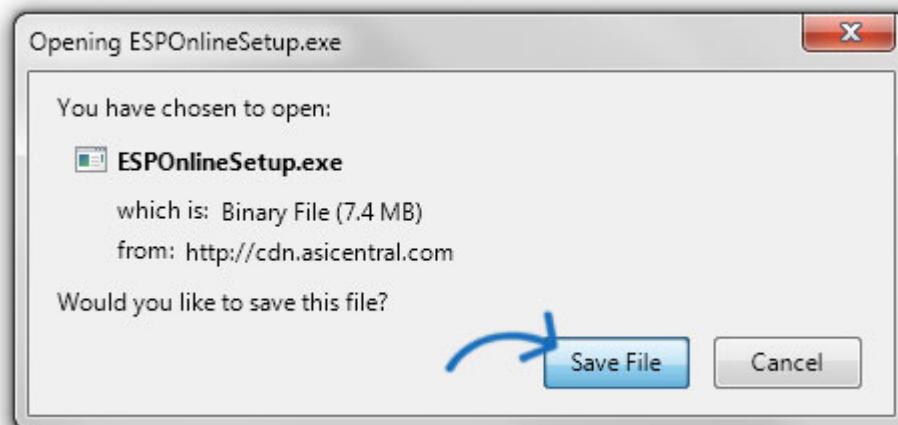
A red bar will appear at the bottom warning you that “The publisher of ESPOnlineSetup.exe couldn’t be verified. Are you sure you want to run the program?” Click on the “Run” button.

**Note:** This warning appears because ASI publishes industry specific (not general or standard) software programs. Internet Explorer is programmed to only recognize standard software publishers, like Java or Microsoft. Downloading ESP Online is completely safe and will not harm your computer.

- **Mozilla Firefox**

The ESPOnlineSetup.exe file will be added to your Downloads. To access your downloads in Mozilla Firefox, click on Tools and select Downloads.

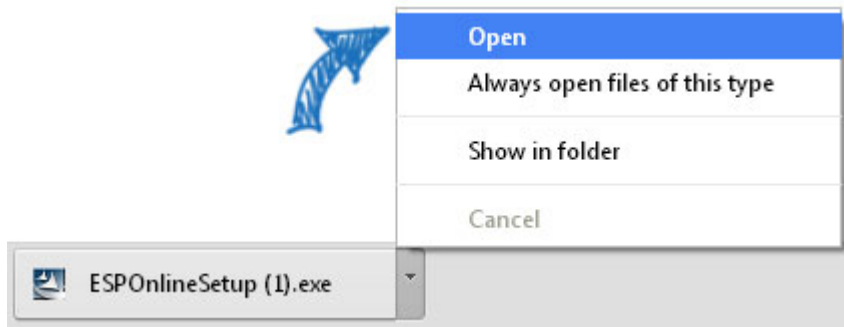
Click ESPOnlineSetup.exe from the options and then click on the Save File button.



- **Google Chrome**

At the bottom of the browser window, a message will appear displaying the ESPOnlineSetup.exe file.

Clicking on the dropdown arrow will display the file options. Click “Open”.



After downloading the ESPOnlineSetup.exe file, an information page will display. This page provides helpful information about how security software may react to this download. The page will read:

**Please Note:**

Please read the following information, then simply **CLOSE OR MINIMIZE** this page and the InstallShield wizard will complete your installation.

**Please read or print this page for assistance in running the automatic update or for logging into ESP Online after the update.**

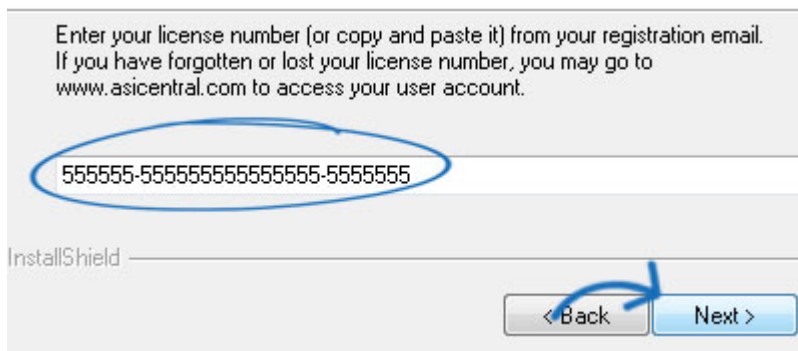
If you receive any of the errors below, please follow the steps provided to resolve.

Minimize this page to continue with the installation.

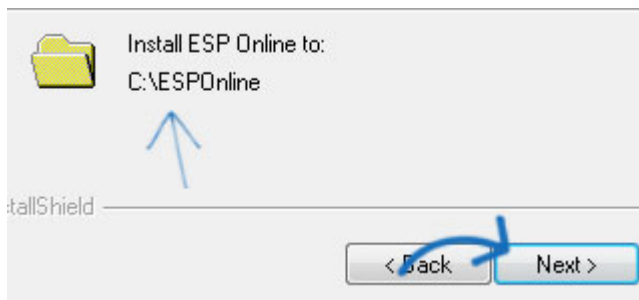
**Note:** Use the Print button to print out a copy of the license agreement.

Select your setup type and then click on the Next button. Most users will have an internet connection.

Paste your license number or type it in. Then, click on the Next button.



The InstallShield Wizard will display the intended location of the installation. Changing this location is not advised. Please do not redirect the installation to your desktop; a desktop icon for ESP Online will be automatically created. Click on the Next button to continue.



Click on the Install button to begin the installation.



When the installation completes, you will see two checkboxes. Uncheck the "View read me file" and check "Launch ESP Online". Then, click on the Finish button.

ESP Online will open. Enter your ASI number, Email Address and Password in the appropriate boxes. Then, click on OK.



You have now successfully installed ESP Online.

Click on your desktop icon at any time to begin using the application.

